

## Disclaimer

**Please Note:** The information provided may include references to an Immunome investigational product or use of an Immunome investigational product that the FDA has not approved; because the FDA has not approved such product(s) or use, no conclusions regarding safety or efficacy may be made. Providing this information should not be construed as a recommendation for use of an Immunome product for unapproved uses. This information may include relevant references to non-Immunome product information derived from publicly available sources. For FDA approved products please consult the product's full prescribing information for a complete discussion of risks and benefits of the product(s) for its approved indication(s).

# Analysis of Changes in T2-weighted Signal Intensity and Tumor Volume and Exposure-response in the RINGSIDE Phase 2 Study of Varegestat for Desmoid Tumors

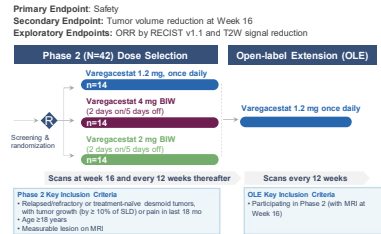
Arun Singh, MD,<sup>1</sup> Mrinal Gounder, MD,<sup>2</sup> Rashmi Chugh, MD,<sup>3</sup> Bernd Kasper, MD, PhD,<sup>4</sup> Brian A. Van Tine, MD, PhD,<sup>5</sup> Vladimir Andelkovic, MD,<sup>6</sup> Janet Yoon, MD,<sup>7</sup> Edwin Choy, MD, PhD,<sup>8</sup> Jeremy Lewin, MBBS,<sup>9</sup> Javier Martin-Broto, MD, PhD,<sup>10</sup> Nam Bui, MD,<sup>11</sup> Winette van der Graaf, MD, PhD,<sup>12</sup> Lara Davis, MD,<sup>13</sup> Arayee Basu Mallick, MD,<sup>14</sup> HyoSong Kim, MD,<sup>15</sup> Elizabeth T. Loggers, MD,<sup>16</sup> Matthew Birrenkott, PharmD,<sup>17</sup> Eric Song, PhD,<sup>17</sup> Gerald Fetterly, PhD,<sup>17</sup> Jonathan Yovell, MD,<sup>18</sup> Robin L. Jones, MD,<sup>19</sup> Ravin Ratan, MD<sup>19</sup>

<sup>1</sup>University of California Los Angeles, Los Angeles, CA, USA; <sup>2</sup>Memorial Sloan Kettering Cancer Center, New York, NY, USA; <sup>3</sup>University of Michigan, Ann Arbor, MI, USA; <sup>4</sup>Mannheim University Medical Center, Mannheim, Germany; <sup>5</sup>Washington University School of Medicine, St. Louis, MO, USA; <sup>6</sup>Princess Alexandra Hospital and Icon Cancer Centre, South Brisbane, Australia; <sup>7</sup>City of Hope Comprehensive Cancer Center, Duarte, CA, USA; <sup>8</sup>Massachusetts General Hospital, Boston, MA, USA; <sup>9</sup>Peter MacCallum Cancer Centre, Victoria, Australia; <sup>10</sup>Hospital Universitario Fundación Jiménez Díaz, Madrid, Spain; <sup>11</sup>Stanford Health Care, Stanford, CA, USA; <sup>12</sup>Netherlands Cancer Institute, Amsterdam, The Netherlands; <sup>13</sup>Oregon Health & Science University, Portland, OR, USA; <sup>14</sup>Thomas Jefferson University Stroneg Memorial Hospital, Philadelphia, PA, USA; <sup>15</sup>Yonsei University College of Medicine, Seoul, Republic of Korea; <sup>16</sup>Fred Hutchinson Cancer Center, Seattle, WA, USA; <sup>17</sup>Immunome Biotech, WA, USA; <sup>18</sup>The Royal Marsden NHS Foundation Trust & Institute of Cancer Research, London, UK; <sup>19</sup>University of Texas MD Anderson Cancer Center, Houston, TX, USA

## BACKGROUND

- T2-weighted (T2W) signal intensity and tumor volume on MRI may be more sensitive than RECIST for assessing treatment effect in desmoid tumors (DTs)
- On T2W images, hyperintense areas are associated with active fibroblast proliferation and hypointense areas are associated with loss of tumor cells and an increase in collagenous tissue<sup>1</sup>
- The Phase 2 part of the RINGSIDE study (NCT04871282) demonstrated early and continued MRI-based improvements in DTs with varegestat (AL102) therapy, and a safety profile consistent with other gamma secretase inhibitors<sup>2</sup>
- We report exploratory analyses of T2W signal intensity, tumor volume and exposure-response (E-R) in the RINGSIDE Phase 2 study

## RINGSIDE Phase 2 Study & Open-Label Extension



## METHODS

### Post-hoc Analysis

- Descriptive analysis of T2W signal intensity, tumor volume and RECIST sum of diameters
- Linear correlations of best % changes from baseline on these 3 assessments were evaluated with Pearson correlation coefficient
- A total of 25 responses were observed, of which one PR was unconfirmed
- Exposure-response modeling evaluated time course of drug effect on tumor volume to support selection of 1.2 mg once daily for further study
- Study start: Oct 6, 2021 | Data cutoff: Jan. 6, 2025
- 42 participants enrolled → 29 (69%) entered the OLE
- Median time on treatment: 23.3 months (range 0.7 – 38.8)
- 12 participants (29%) still on treatment

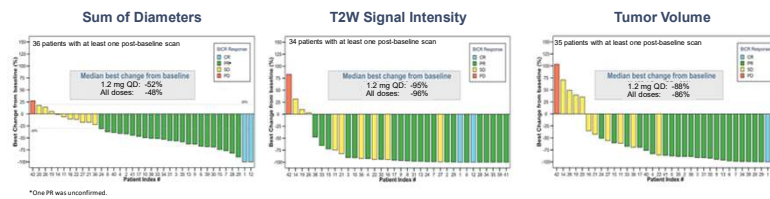
### Study Population

Characteristics	1.2 mg once daily (n=14)	All doses (N=42)
Age (years, median (min, max))	44.0 (24, 61)	38.5 (19, 72)
Sex, n (%) – Female   Male	11 (78.6)   3 (21.4)	31 (73.8)   11 (26.2)
ECOG Performance Status, n (%) – 0   1	14 (100.0)   0	35 (83.3)   7 (16.7)
Tumor Location at Initial Diagnosis, n (%)		
Intra Abdominal	5 (35.7)	12 (28.6)
Extra Abdominal	9 (64.3)	30 (71.4)
Tumor volume at baseline (cm <sup>3</sup> ), median (min, max)	46.30	65.10
	(1.4, 244.9)	(1.4, 1270.3)
Prior Desmoid Tumor Systemic Therapies, n (%)	9 (64.3)	29 (69.0)
Prior Desmoid Tumor Surgeries, n (%)	7 (50.0)	19 (45.2)
Prior Desmoid Tumor Radiation Therapies, n (%)	1 (7.1)	4 (9.5)

## RESULTS

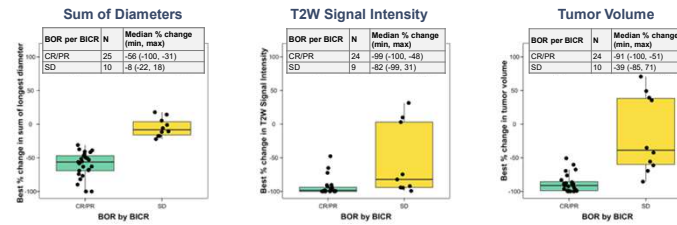
### Best % Change from Baseline by RECIST Response

Color coding by RECIST response shows that 4 and 6 additional patients with SD had more than 50% reduction from baseline in tumor volume and T2W, respectively



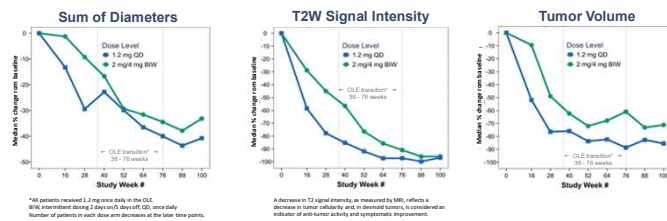
### Median Best % Change in Patients with CR/PR and SD

Increased sensitivity of T2W signal intensity and tumor volume show 6 and 4 SD patients overlap with RECIST v1.1 responses



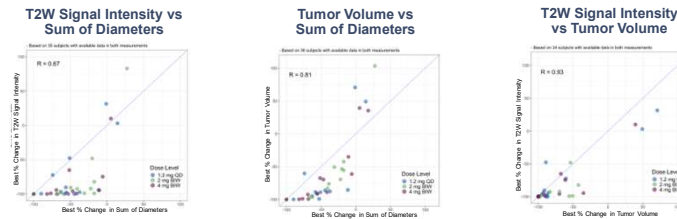
### Median % Changes Over Time

Overall, median % changes at Week 16 were -8% by sum of diameters, -39% by T2W, and -24% by tumor volume



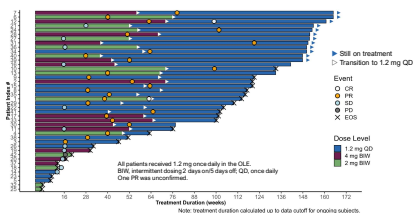
### Best % Change: Correlations Among T2W, Volume, SOD

- T2W and volume demonstrated positive correlation with sum of diameters (R=0.67 and R=0.81, respectively)
- T2W and volume were highly correlated (R=0.93)



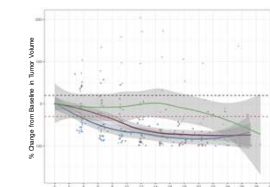
### Treatment Duration and Time to Response

Treatment duration: median 112 weeks | maximum: 165 weeks



### Exposure-Response Analysis

Predicted median time to 30% decrease in tumor volume was 3 months with the 1.2 mg once daily regimen



## CONCLUSIONS

- Reductions in T2W signal intensity and tumor volume on MRI preceded subsequent varegestat responses by RECIST in adults with DT
- These data add to a growing body of work showing T2W signal intensity and tumor volume may play a key role in evaluating treatment response in DT
- Future research should evaluate the prognostic or predictive value of these imaging techniques in DT and standardization to allow for use in clinical management of DT patients
- Exploratory exposure-response modeling suggested that 1.2 mg once daily dose achieves earlier and greater response than the other dose regimens

Abbreviations: BICR, blinded independent central review | BIW, intermittent dosing 2 days on/5 days off | CR, complete response | ITT, intention to treat | MRI, magnetic resonance imaging | SLD, sum of longest diameter | OLE, open-label extension | ORR, objective response rate | PR, partial response | PD, progressive disease | DC, once daily | RECIST, Response Evaluation Criteria in Solid Tumors | T2W, T2-weighted

References: 1. Zanchetta E, et al. Magnetic resonance imaging patterns of tumor response to chemotherapy in desmoid-type fibromatosis. *Cancer Medicine*. 2021;10(4):436-439. | 2. Kasper B, et al. Updated Results of the RINGSIDE Phase 2 Trial and Open-Label Extension of AL102 for Treatment of Desmoid Tumors. *Poster at American Society for Medical Oncology Annual Meeting*. Sep 13-17, 2024, Barcelona, Spain.

Acknowledgements: The RINGSIDE study (NCT04871282) was sponsored/funded by Immunome and Ayala Pharmaceuticals, Inc. We thank the RINGSIDE investigators, their families, the investigators, the Desmoid Tumor Research Foundation, and Laura LaRusso, MS, ELS for medical writing and graphics funded by Immunome.

Speaker Disclosures: Dr. Singh reports consulting/advisory roles for Lilly, Daiichi Sankyo, Bayer and Ipsen, leadership/role/stock ownership at Celis Oncology Solutions; speakers' bureau for Lilly, Eisai, Novartis, Daiichi Sankyo, Decipher, Scigen Health, MD Life Sciences, AAD, RAIN Therapeutics, TRACON Pharma, and SpringWorks Therapeutics; travel expenses from Lilly, Daiichi Sankyo, Eisai, Novartis, Decipher, Galenka Therapeutics, honoraria from Galenka Therapeutics; and research funding to his institution from Lilly, Nanocancer, Bristol Myers Squibb, TRACON Pharma, Blueprint Medicines, Decipher, Intensity Therapeutics, Immunome Inc. (formerly Ayala Pharmaceuticals), Eisai.